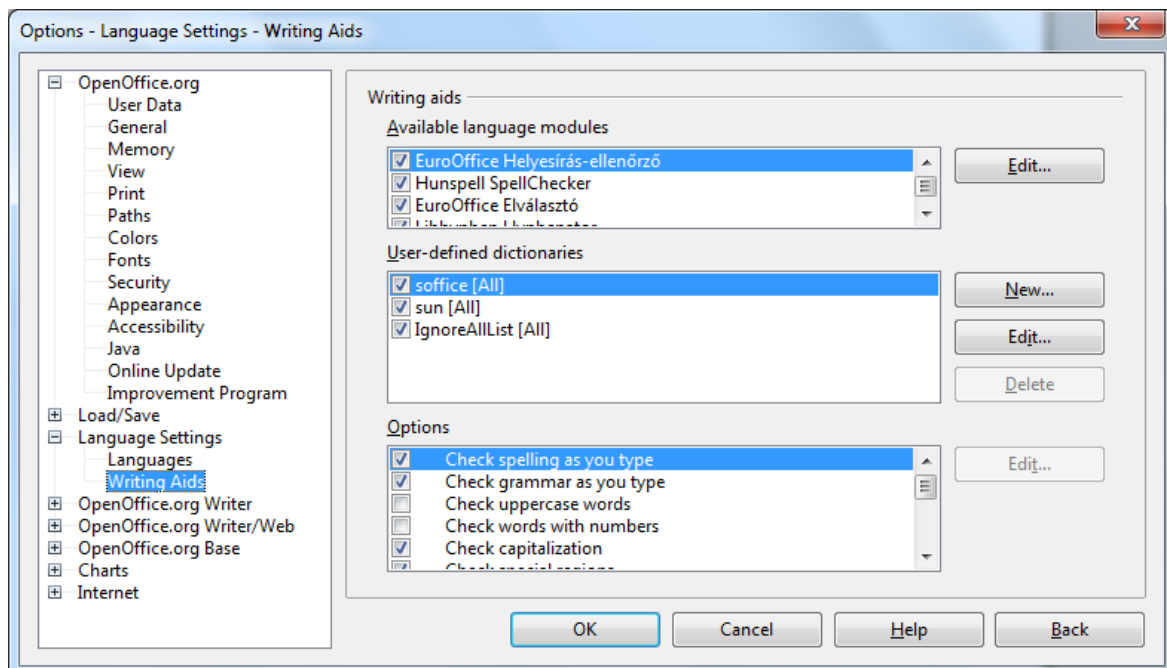


## EuroOffice Language Tools

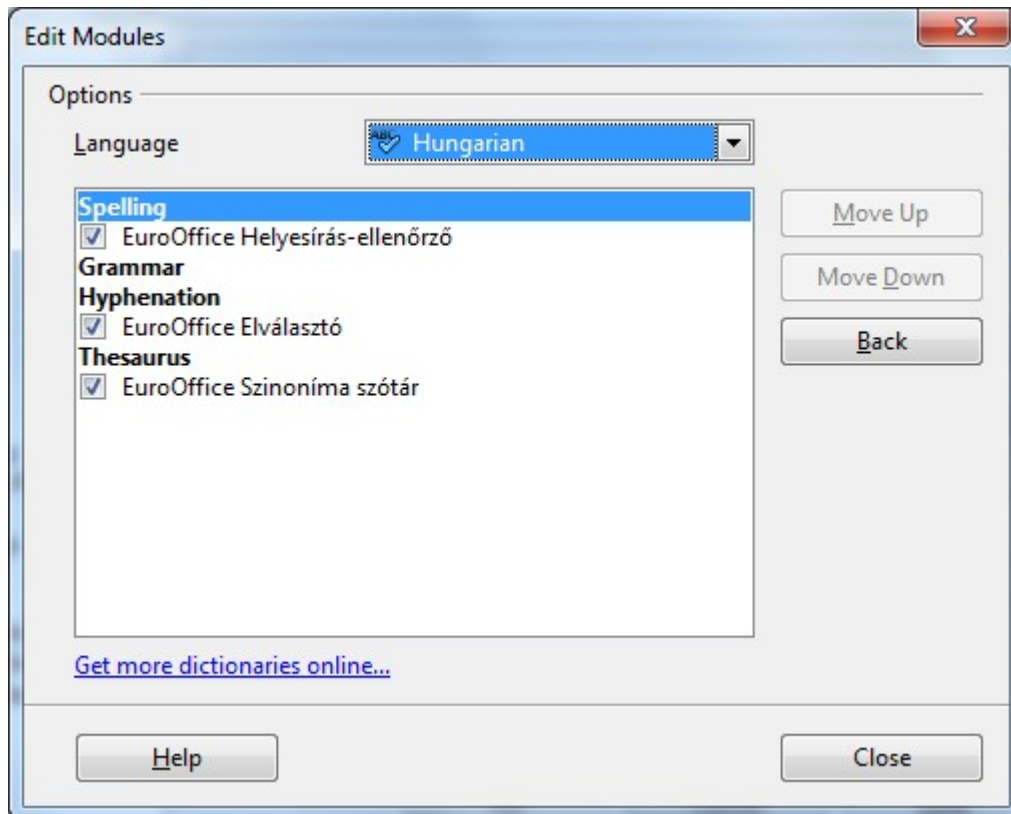
EuroOffice LanguageTools consists of four extensions: SpellChecker, Hyphenator, Thesaurus and Grammar Checker.

### How to activate EuroOffice Language Tools?

There is a list of supported language tools in dialog of *Tools - Options – Language Settings – Writing Aids*. Check on the boxes beside EuroOffice toolkits, if they are checked out.



You can check the available tools in every language by choosing Edit button.



If there is an EuroOffice professional tool and an OpenOffice language tool, too, than you can choose one of them to use. You can activate your EuroOffice Spellchecker and Hyphenator as follows:

1. With Move Up/Down buttons you can move EuroOffice Spellchecker to the top line.
2. Check on EuroOffice Hyphenator box.

In English you can choose only OpenOffice.org Thesaurus, but there is no other grammar checker except ours.

## EuroOffice Spellchecker

EuroOffice Spellchecker is an EuroOffice (OpenOffice.org) extension by MultiRáció Ltd. that provides an alternative spellchecker for English, German, Polish and Hungarian. The database and algorithms of this spellchecker are provided by the industry-leading Morphologic Ltd.

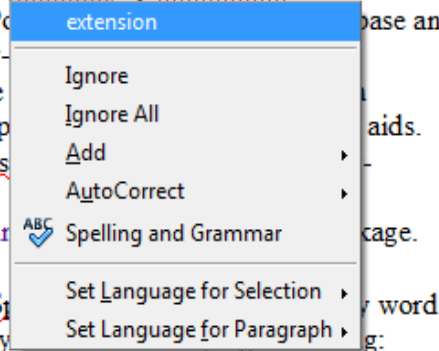
To use EuroOffice Spellchecker you may have to deactivate the spellchecker supplied with OpenOffice.org. To do so open the Tools menu, open the Options dialog and go to Writing aids. Here you can deactivate the built-in spellchecker or set the spellcheckers on a language-by-language basis.


EuroOffice Spellchecker extension is part of [EuroOffice Language Tools Professional](#) package.

This extension is a very useful help in document creation. Spellchecker provides a word by word checking and marks errors with red underlines and enables you to fix them by right clicking:

## EuroOffice Spellchecker

EuroOffice Spellchecker is an EuroOffice (OpenOffice.org) extension by MultiRacio Ltd. that provides an alternative spellchecker for English, German, Polish and Hungarian. The algorithms of this spellchecker are provided by the industry. To use EuroOffice Spellchecker you may have to deactivate the built-in spellchecker of OpenOffice.org. To do so open the Tools menu, open the Options dialog, here you can deactivate the built-in spellchecker or set the language basis. EuroOffice Spellchecker extension is part of EuroOffice Language Tools. This extension is a very useful help in document creation. Spelling checking and marks errors with red underlines and enables you to correct them.



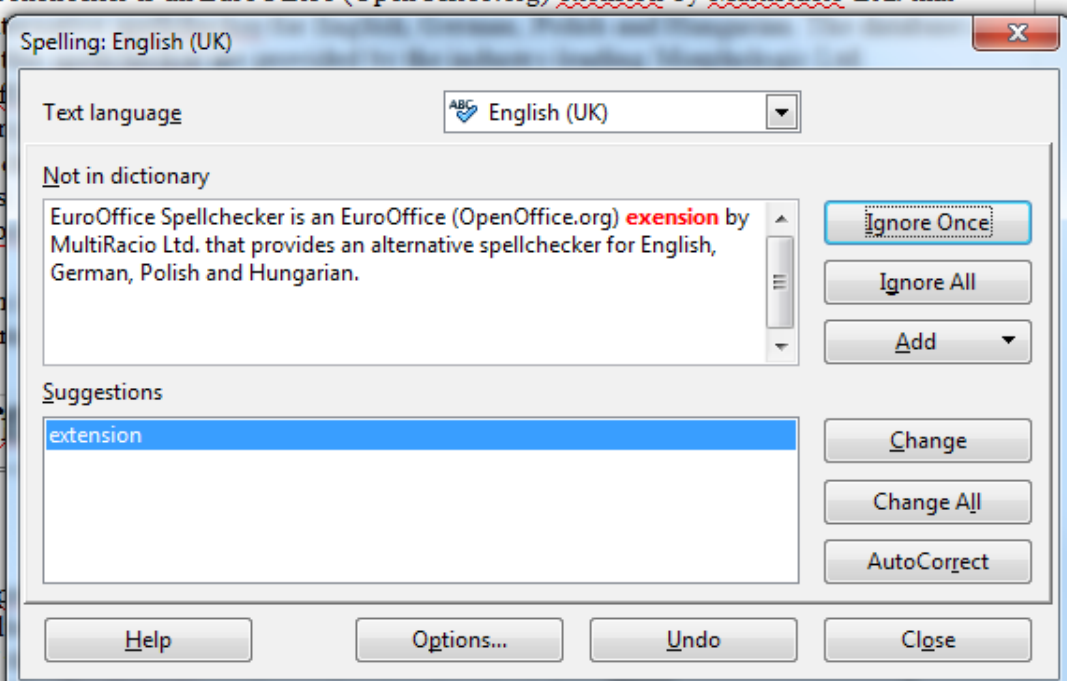
You can scan the whole document once with using  button on Standard toolbar or through the F7 key, but you can choose the dialog from *Tools* menu *Spelling and Grammar*, too. Errors and suggested alternatives are then displayed in a dialog. To accept one of the offered suggestions in the bottom box, select it and press “Change” button. If there is no any suggestions, correct the word manually and press the “Change” button. The word will be replaced with the suggestion and the process continues with next error.

## EuroOffice Spellchecker

EuroOffice Spellchecker is an EuroOffice (OpenOffice.org) extension by MultiRacio Ltd. that provides an alternative spellchecker for English, German, Polish and Hungarian. To use EuroOffice Spellchecker you may have to deactivate the built-in spellchecker of OpenOffice.org. Here you can deactivate the built-in spellchecker or set the language basis. EuroOffice Spellchecker extension is part of EuroOffice Language Tools. This extension is a very useful help in document creation. Spelling checking and marks errors with red underlines and enables you to correct them.

## EuroOffice

EuroOffice Spellchecker provides an alternative spellchecker for English, German, Polish and Hungarian. To use EuroOffice Spellchecker you may have to deactivate the built-in spellchecker of OpenOffice.org. Here you can deactivate the built-in spellchecker or set the language basis. EuroOffice Spellchecker extension is part of EuroOffice Language Tools. This extension is a very useful help in document creation. Spelling checking and marks errors with red underlines and enables you to correct them.

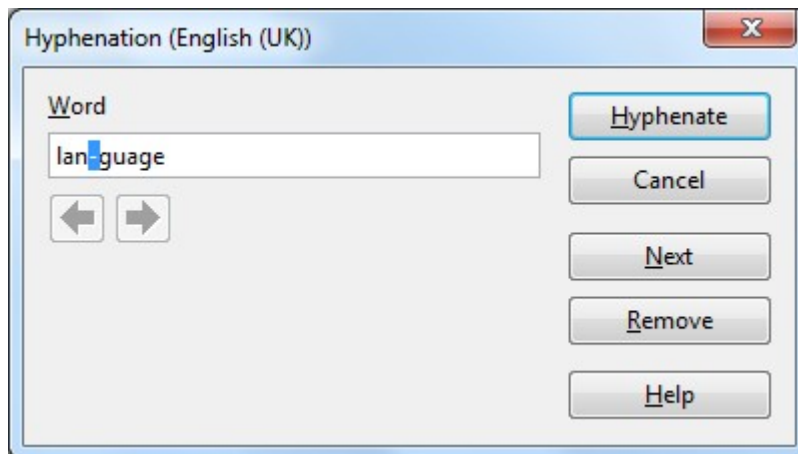


## EuroOffice Hyphenator

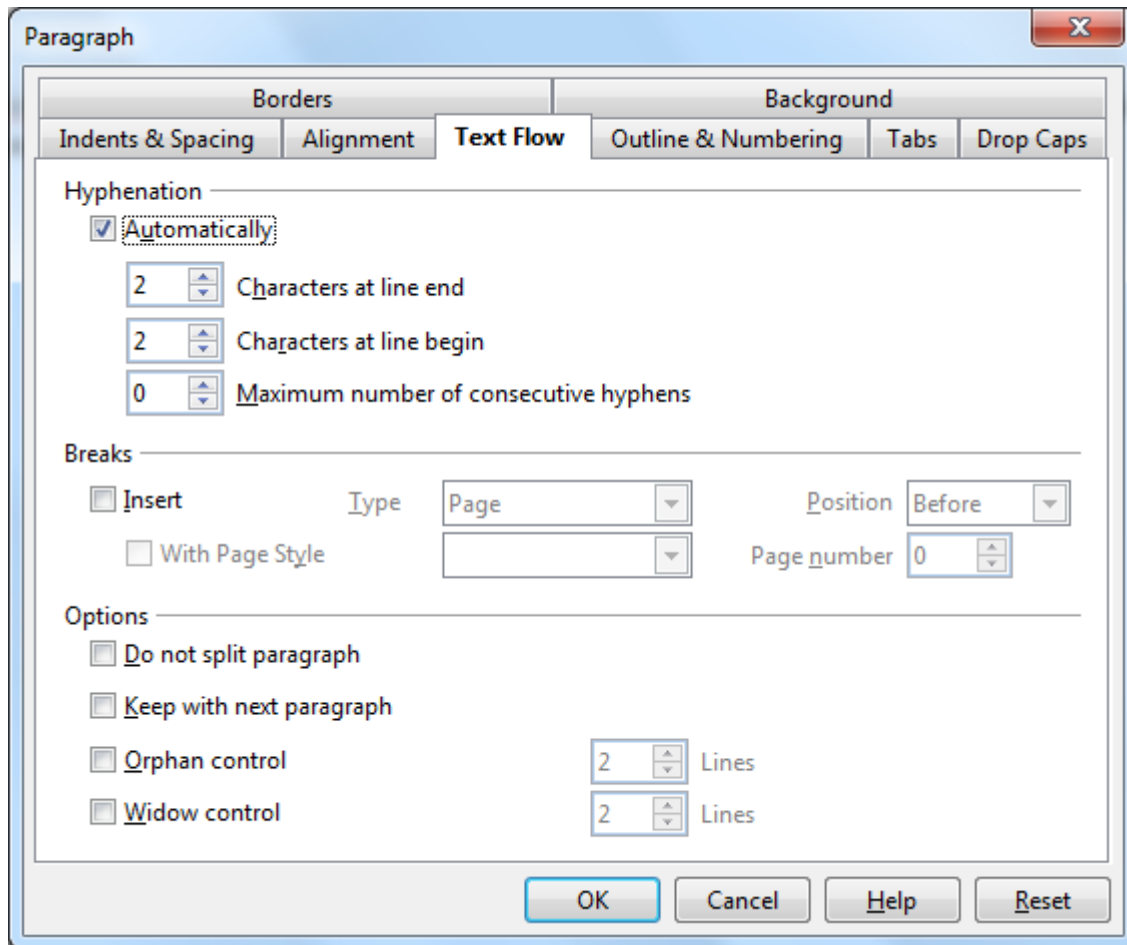
EuroOffice Hyphenator is an EuroOffice (OpenOffice.org) extension by MultiRacio Ltd. that provides an alternative English (UK), German, Polish and Hungarian hyphenator. The database and algorithms of this hyphenator are provided by the industry-leading Morphologic Ltd.

To use EuroOffice Hyphenator you may have to deactivate the hyphenator supplied with OpenOffice.org. To do so open the Tools menu, open the *Options* dialog and go to *Writing aids*. Here you can deactivate the built-in hyphenator or set the hyphenators on a language-by-language basis.

To use this function, choose *Tools – Language – Hyphenation* submenu. In the Hyphenation dialog the first word appears and hyphenator module gives a suggestion for hyphenating. You can change this position with using arrow icons, or choose “*Hyphenate*”, and a conditional separator will be inserted in that position and moves on to the next word to hyphenate.



You can choose automatic hyphenation in *Format – Paragraph – Text Flow*. Check in “*Automatically*” checkbox, then choose “OK”. In this case, there will be inserted hyphens in the right positions of the paragraphs have been chosen. Automatic hyphenation can be used in paragraph styles as well.

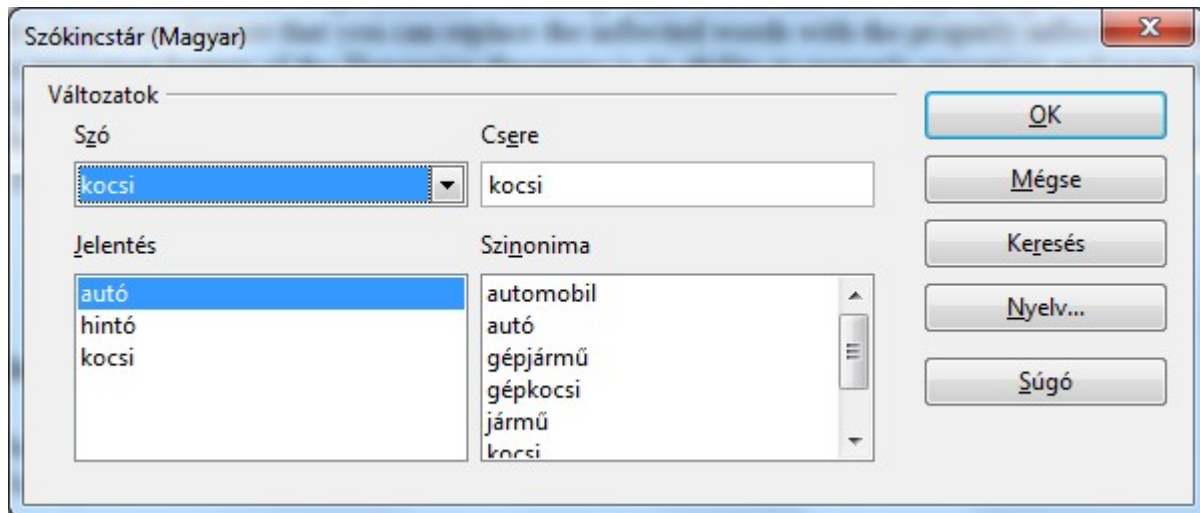


## EuroOffice Thesaurus

EuroOffice Thesaurus is an EuroOffice (OpenOffice.org) extension by MultiRáció Ltd. that provides an alternative Hungarian thesaurus. The database of this thesaurus is provided by the industry-leading Morphologic Ltd. and Morphologic technology is also used to handle inflections. It means that you can check the synonyms of inflected words and replace these words with the properly inflected forms of their synonyms.

EuroOffice Thesaurus helps you to avoid using same words and choosing a proper synonym. A very important feature that you can replace the inflected words with the properly inflected forms.

An important feature of the Hungarian thesaurus is its ability to properly recognize and manipulate words with suffixes. Mark out a word in your document, then choose *Tools – Language – Thesaurus*. If you find a good synonym in the list, just choose it with a single click, then press “OK” button and the original word will be changed with your synonym. (See the example dialog below; you can see the synonyms of an original Hungarian word, which means coach in English.)



## EuroOffice Grammar Checker

EuroOffice Grammar Checker is an EuroOffice (OpenOffice.org) extension by MultiRáció Ltd. that provides grammar checking. It is part of the EuroOffice Language Tools Professional collection.

Grammar checker provides a whole sentence monitoring and considers grammatical errors. It marks errors with green underlines and enables you to fix them by right clicking

The following languages are supported:

- Czech
- Dutch
- English
- French
- German
- Hungarian
- Italian
- Lithuanian
- Polish
- Slovenian
- Spanish
- Swedish
- Ukrainian

All of these languages with the exception of Hungarian are supported by using the wonderful open-source grammar checker library [LanguageTool](#). Hungarian is supported through a high-quality proprietary grammar checker licensed from [MorphoLogic](#). For some languages a large number of rules is checked, while for others the collection of rules has just started. If you wish, you can help out by contributing to the LanguageTool project.

EuroOffice Grammar Checker works similarly to the spellchecker, but is completely independent of it. Two methods are provided for finding grammatical errors. You can either turn on online checking, which will underline the errors with green as you type, or you can scan the whole document once it is ready and review the errors and suggestions in a dialog. Both methods can be activated using toolbar buttons (for underlining) and (for the dialog), and the dialog-based checking can also be started from the Tools menu or through the Alt-F7 key combination.

### Online grammar checking



Online grammar checking marks grammar errors in the document with a green underline. It can be enabled or disabled using its toolbar button. (It is enabled by default.)

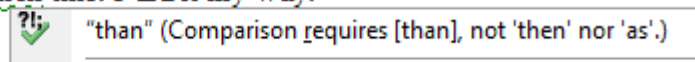
For example:

But more, much more then this. I did it my way.

Right-clicking on the underlined part of the document will yield further information about the error, and allow you to accept a suggested alternative.

For example:

But more, much more then this. I did it my way.



Please note that the underlining will flag the document as modified, and may result in extra warning and confirmation dialogs as well as confuse the undo mechanism. These are currently unavoidable negative side effects. They can be avoided by using the dialog-based interface.

### On demand grammar checking



The corresponding toolbar button, the EuroOffice Grammar Checker menu item in the Tools menu or the Alt-F7 keyboard shortcut can be used to invoke the on demand grammar checking. This method can be used to scan the whole document for grammar errors. Errors and suggested alternatives are then displayed in a dialog.

This dialog provides three options for handling the error:

You can manually correct the sentence in the top left textbox and press the Update and find next error button to change the sentence. The sentence is then checked again for further errors and if none are found, the process continues with the next sentence.

To accept one of the offered suggestions in the bottom box, select it and press Accept and find next error. The sentence will be replaced with the suggestion and the process continues.

If the sentence is actually correct, or the error is intentional, press Find next error to skip to the next error.

If the sentence contains more than one error, they will be found one at a time. This means that the suggestions themselves will also contain errors in these cases, because only one is fixed at a time. While this may appear strange (a grammar checker suggesting grammatically incorrect alternatives), one by one the errors will all be handled, so it is safe to accept these partially fixed suggestions.

